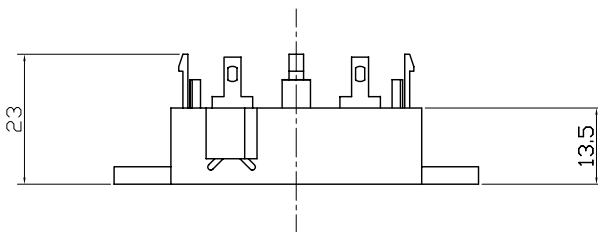


SPECIFICATION

1. Rated Voltage2.83 Sine Wave RMS
2. Max. Rated Input Voltage50Vp-p Square Wave
3. Min. Sound Pressure Level102dB at 2.83V Sine Wave RMS/2~2.5KHz/50cm
4. Rated Frequency Range2000~4000Hz
5. Max. Capacitance at 100Hz273nF
6. Shell Material/ColorPA66/Black
7. Cone material.....PEI
8. Operating Temperature-40~+105°C 95%RH
9. Store Temperature-40~+105°C
10. Weight9g



				KEPO NINGBO KEPO ELECTRONIC CO.,LTD http://www.chinaacoustic.com	
No.		DESCRIPTION	APPROVED	DATE	Tweeter Dimar
TOLERANCES UNLESS NOTED OTHERWISE X ± .XX ± .XXX ± 90° FORMED ANGLES +12° -1° FIRST ANGLE PROJECTION		DRAWN	APPROVALS	DATE	PCT-4540-PEI1
		CHECKED			UNIT mm DWG NO. OEM1371
		APPROVED		04.12.09	SCALE NOT TO SCALE SHEET VER 1.0